



DUBLIN, IRELAND

The Girl Who Forgot To Sing Badly

Technical Rider

Written by Finnegan Kruckemeyer

Directed by Lynne Parker

Performed by Louis Lovett

Produced by Muireann Ahern Lovett

Age group: 6+ Family Shows. 7+ School Shows Duration: Approx 60 minutes
(with post show option of 10 minutes approx.)

The Company

1 x Actor
1 x Company Manager
1 x Tour Production Manager
1 x Stage Manager/ Sound Manager
1 x Lighting Manager

Load in and Load out (duration)

Set up time – the production takes approx 12 hours to load in (all elements with no pre-hang).

If a pre-rig is approved and in place prior to the company's arrival, the load in should take approx. 10 hours.

The load out takes 2.5hrs approx.

Transport

Depending on country of destination, the set either travels in a 20ft Rigid Truck or a 20ft sea container. Access Details to be discussed in advance.

Receiving Theatre Technical Staff/ Crew Requirements

Load In: 8 crew members

3 x LX
3 x Stage (ideally 1 member to be a carpenter).
1 x Sound
1 x Wardrobe

Running of show: 3 crew members

1 x Lighting,
1 x stage,
1 x sound *(Please note the company lighting/sound personnel operate)*

Load out: 5 crew members

2 x LX,
2 x Stage
1 x Sound

Please note: ***Roles may be combined according to venue regulations if discussed with company in advance.*

Power

All Set practical electrical equipment toured by the company requires a 230volt, 50 hz supply and come with British 15amp standard plugs (3 Round pins).

*Please ensure that there are adequate transformers and adaptors available upon arrival.

Stage requirements

Minimum stage requirements_W:26FT X Depth 26FT X Grid Height 18FT

Stage should be flat (not raked) and a smooth painted surface or Black Dancefloor.

Stage should be a black box style set up, Full black curtain at rear(not pleated) with 4 clean black masking legs aside running left to right or can also work with masking running up and down stage allowing for entry/exits up and down stage.

Complete blackout capability is absolutely necessary.

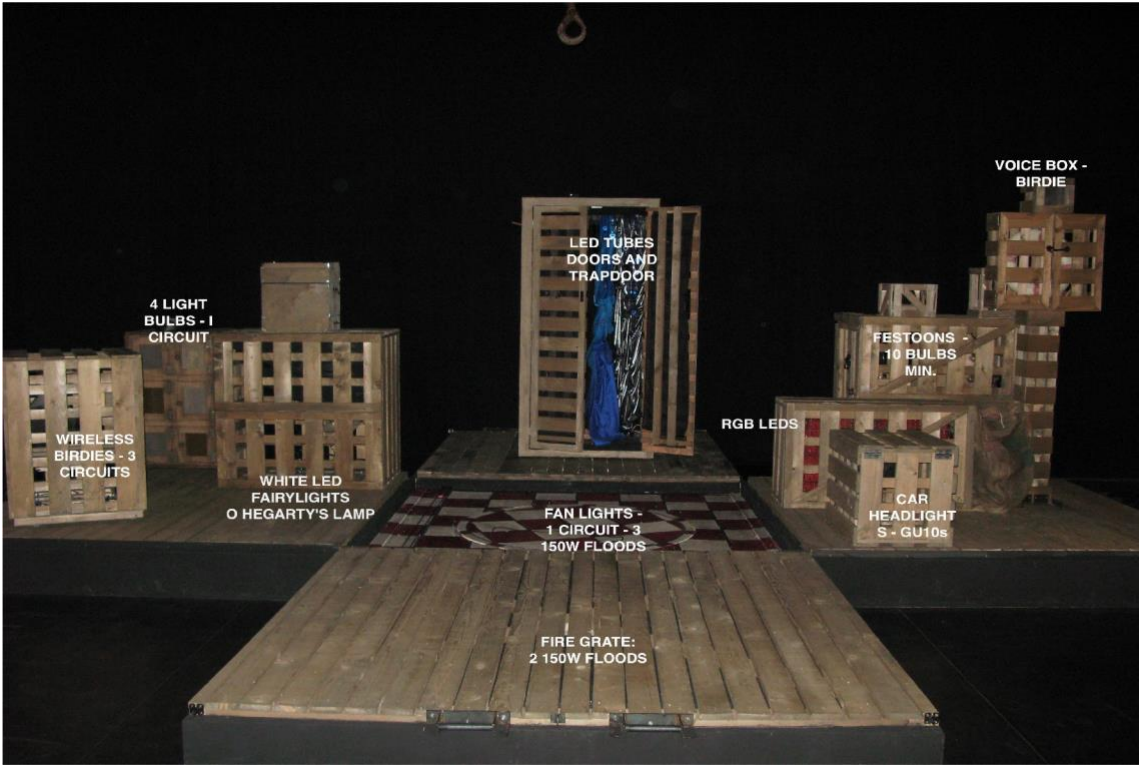
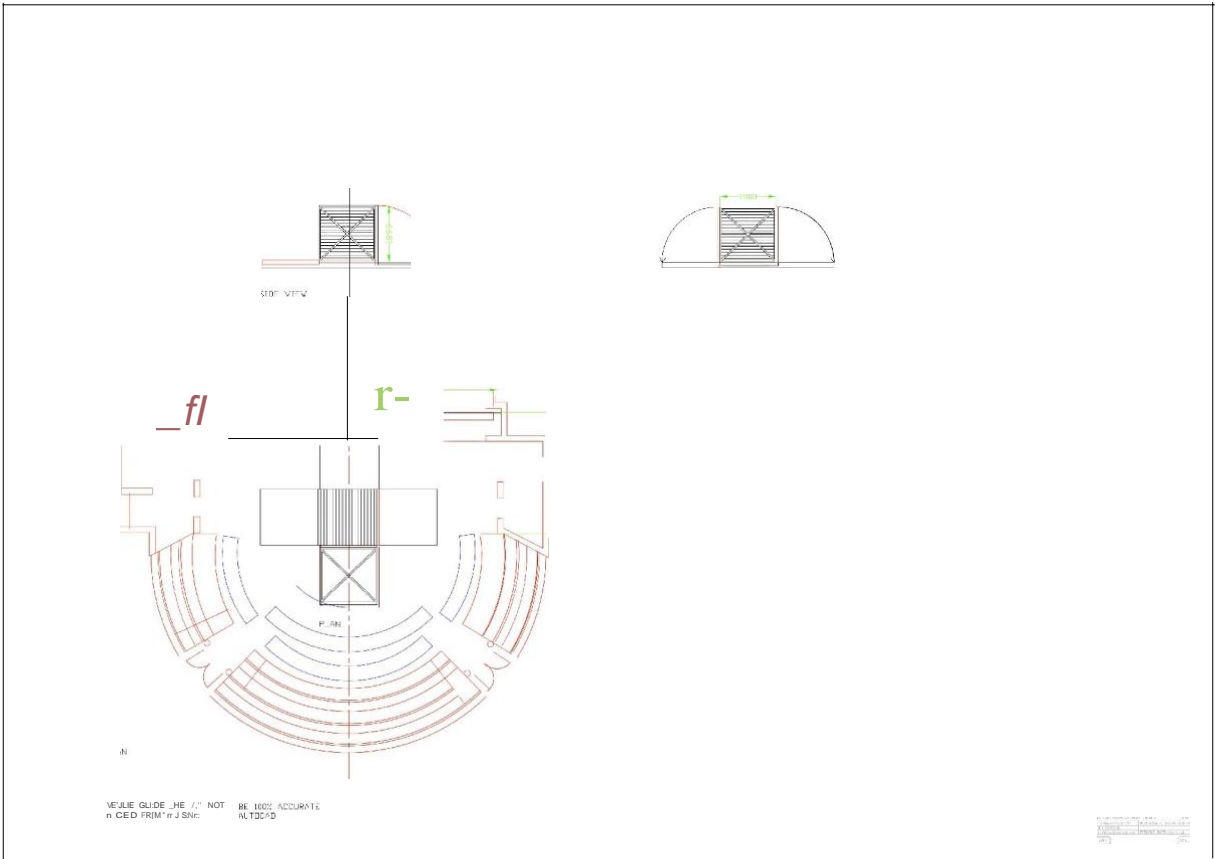
Set

(See attached plan & photo)

The set is essentially a large wooden crate containing smaller wooden crates which the actor, in the course of the performance, unpacks & eventually repacks as the story unfolds. When in the open position the crate walls become the floor – they hinge down onto the raised platform floor structure (300mm high) which is in a cross shape 6m x 6m.

Overhead we rig three pulleys, one for snow drop, one for coat drop and one for a hook.

Bar positions to be approved onsite.



Lighting

The receiving venue will supply

- α. 96 Dimmers – (see attached lighting plan)
- β. Lighting desk: ETC Eos/Gio/ion, please note an element console **would not be sufficient**

Inventory

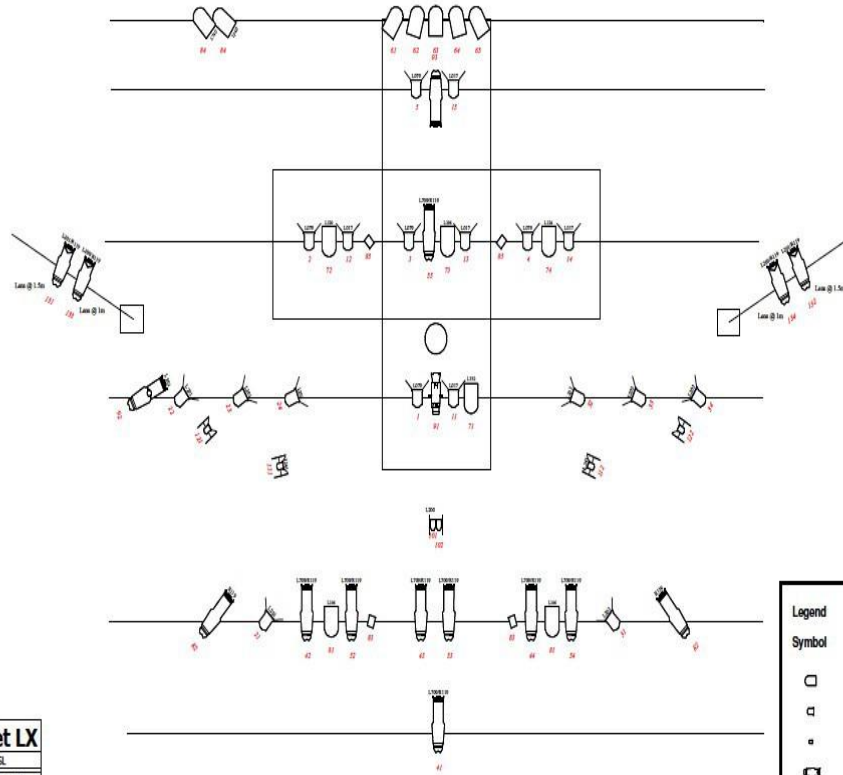
- χ. 18 x Cantata F 1.2k
- δ. 4 x S4 25/50 750w
- ε. 12 x S4 15/30 750w
- φ. 1 x S4 19 750w
- γ. 13 x Par 64 MFL
- η. 4 x strand Quartet F 650W or equivalent
- ι. 1 x Mirrorball (Motorized)
- φ. 4 x Pinspots
- κ. 1 x Unique2 Hazer
- λ. Transformers x 12
- μ. All Colour

NOTE: The performance requests the use of a hazer machine, please can the company be notified if this requires prior approval by the venue.
On receiving the theatre's technical specs, lighting & Hanging plot plan & section - our lighting designer will draw up a bespoke lighting plan to suit venue.

The Company will supply

- v. 4 wireless DMX lighting systems for inside of set crates
- o. 2 x birdies for front light (d/s floor position).

GENERIC TOURING PLAN



Practicals/Set LX	
SR	SL
311 Blue LED	311 Blue LED
	312 RGB LED
313 Music Box	
314 Police Lamp	
321 Festoon	321 Festoon (x2)
	322 Life Belt
	323 Voice Box
401	Haze Pump
402	Haze Fan
501	House LX
Gobo in CH2 - DHA138 Window	
Scale - 1:50 @ A3	



Legend		
Symbol	Name	Count
□	Par 64 MFL	13
◻	Canata F	18
◼	Quamet Fresnel	4
◽	Source 4 25/50	4
◾	Source 4 15/30	12
◿	Source 4 19	1
◊	Pinspot	4
◈	Birdie	2
○	Mirror Ball	1

Sound

NB: Sound Operation position to be in middle of Auditorium, with good sightlines to the stage

The receiving venue will supply

A suitable sound system consisting of:

4 x Flown onstage speakers, split left & right

2 x stage monitors, split left and right

2 x sub base units, to be linked with flown onstage speakers

Control - mixing console with a minimum of 8 mic/ line inputs with 6 discreet outputs

3 x headset and belt pack communications system. 2 packs to be located at FOH op positions, the third to be located upstage right

The Company will supply

Laptop running Qlab program, interface, all cabling to suit.

1x bluetooth speaker placed on set

Channel list

QLab	Input Channel	Output channel	Speaker Position
1	1	Stereo Left	Front of House Left
2	2	Stereo Right	Front Of House Right
3	3	Mono Aux/Group 1	On the ground upstage of stage right box
4	4	Mono Aux/Group 2	On the ground upstage of stage left box
5	none	QLab audio patch 2	Bluetooth speaker, Inside prop box - 'O'Hegarty's box'

Stage Management

Stage

- 1 vacuum required for reset each performance.
- 1 Mop and Bucket

Dressing rooms

The company will require 2 well equipped dressing rooms with adequate lighting, heating/air-conditioning, ideally with ensuite bathroom or located nearby.
Hairdryer, Towels, Showering facility with hot & cold water in one dressing room

Green Room

Tea and coffee making facilities
Use of kettle for show preparation
Drinking water

Wardrobe

The company will require access to a washing machine & drier.
A costume rail to be available in both Dressing rooms
An iron & ironing board

Internet/office

The company requests that there is wireless internet available both in auditorium and dressing room areas upon arrival.

A room/space will be required to act as a visiting production office with internet and printing capabilities.

CONTACT:

Muireann Ahern Lovett
Tour Producer/ Artistic Director
The Girl Who Forgot to Sing Badly
Ph: +353 (0)86 8223377
muireann@theatrelovett.com
